

# SANTELLI

FENCING EQUIPMENT

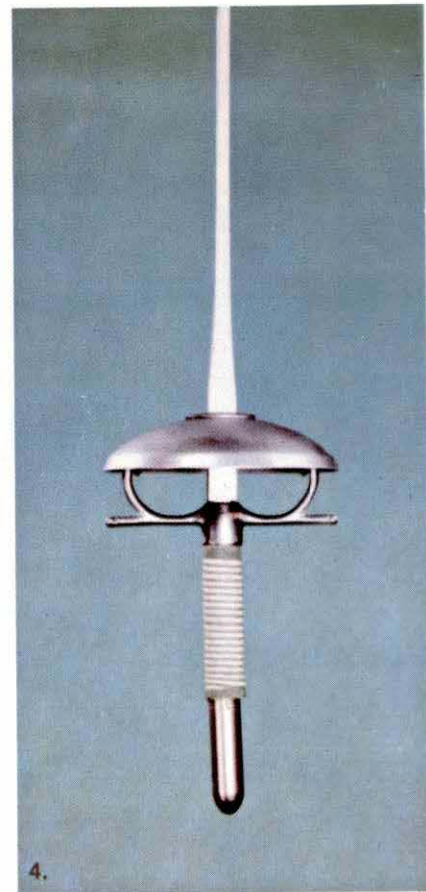


412 Sixth Avenue  
New York, N. Y. 10011

## FOILS AND EPEES

1. **CHAMPIONSHIP FOIL.** Mounted with tournament blade and handsome leather-wrapped handle. Your choice of 4" guard in steel or aluminum.
2. **SANTELLI REGULATION FOIL.** Mounted with selected blade, colorful cord-wound handle, and steel or aluminum 4" guard.
3. **REGULATION FOIL.** Sturdy beginner's model with 3½" steel guard and rugged cord-wound handle.
4. **ITALIAN FOIL.** Mounted with imported steel or aluminum guard, selected blade. Choice of cord-wound or carved wood handle.

Please specify on your order whether equipment is for right or left-handed fencer.

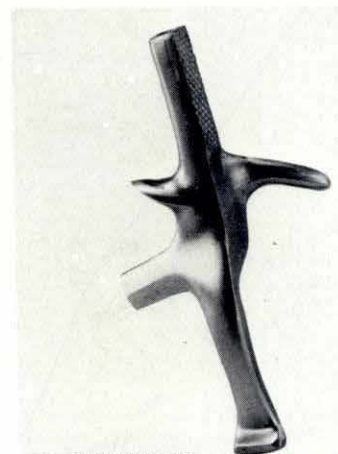


1.

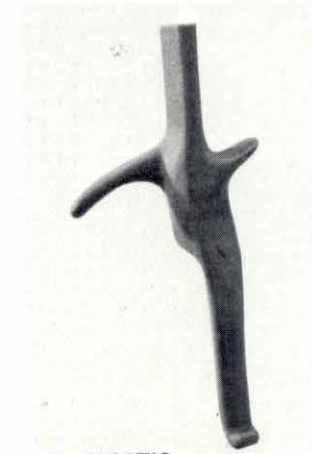
## PISTOL GRIP FOILS

Providing extra strength in weapon control and mounted with choice blade and 4" steel or aluminum guard, these specially designed grips are available in the following styles:

5. **BELGIAN MODEL FOIL.** Choice of plastic or aluminum.
6. **AMERICAN MODEL FOIL.** Choice of plastic or aluminum.
7. **VISCONTI MODEL FOIL.** Aluminum only.



5. ALUMINUM



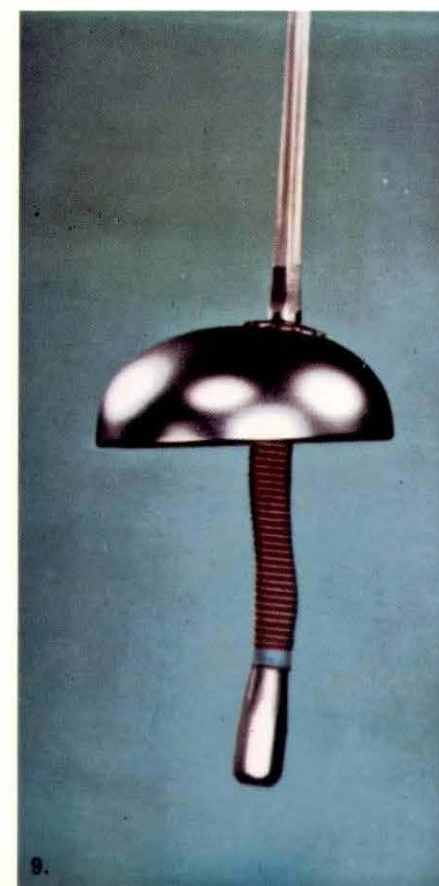
6. PLASTIC



7. ALUMINUM



5. WITH PLASTIC GRIP

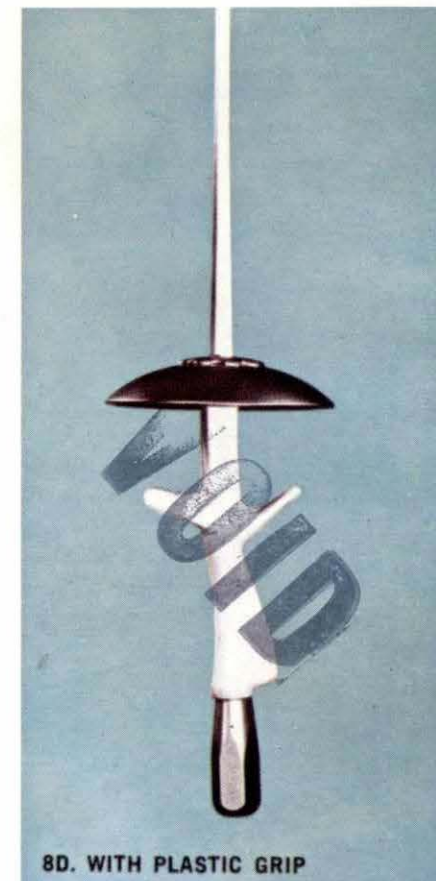


9.

- 8D. **DOS SANTOS MODEL FOIL.** Plastic only.
9. **FRENCH EPEE.** Mounted with reinforced steel or aluminum off-set guard, selected blade and choice of cord or leather-wrapped handle.
11. **ITALIAN EPEE.** Mounted with imported nickel-plated steel guard. Choice of carved wood or cord handle.
13. **PISTOL GRIP EPEE.** Mounted with the handle of your choice: American, Visconti, Belgian, Spanish or Cetrulo. Choice of steel or aluminum guard.



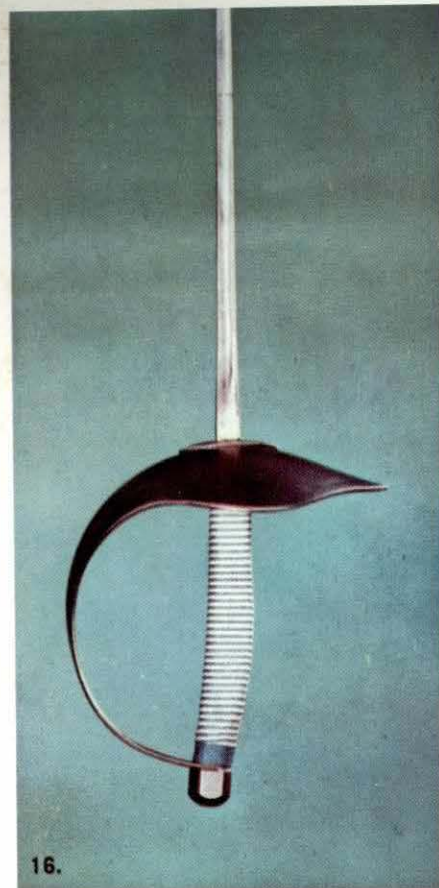
11.



8D. WITH PLASTIC GRIP



13.



16.



18.



17T.

## SABRES

- 16. **HUNGARIAN SABRE.** Tournament model with lightweight blade. Your choice of steel or aluminum guard. Cord-wound or carved wood handle.
- 17. **SANTELLI SABRE.** Durable beginner's model with steel guard and cord handle.
- 17T. **TOURNAMENT SABRE.** Lightest weight, perfectly balanced, with leather grip.
- 18. **OLYMPIC SABRE.** Tournament model with lightweight blade. Your choice of steel or aluminum guard. Cord-wound or carved wood handle.

All weapons are in exact accord with Federation Internationale d'Esclime.

## BLADES AND PARTS

### BLADES

- 19. FRENCH FOIL BLADE.
- 20. PISTOL GRIP FOIL BLADE.
- 21. ITALIAN FOIL BLADE.
- 22. SABRE BLADE.
- 23. EPEE BLADE.

### GUARDS

- 25. ITALIAN FOIL, steel or aluminum.
- 26. FRENCH FOIL, steel or aluminum.
- 28. FRENCH EPEE, steel or aluminum.
- 30. ITALIAN EPEE, steel.
- 31. HUNGARIAN SABRE, steel or aluminum.
- 32. OLYMPIC SABRE, steel or aluminum.

### HANDLES

- 33. FRENCH FOIL, cord-wound.
- 33L. FRENCH FOIL, leather-wrapped.
- 34. ITALIAN FOIL, cord-wound or carved wood.
- 35. FRENCH EPEE, cord-wound.
- 35L. FRENCH EPEE, leather-wrapped.
- 36. SABRE, cord-wound or carved wood.
- 37. PISTOL GRIP, any model.

### POMMELS

- 38. FOIL-EPEE.
- 39. SABRE.
- 40. PISTOL GRIP.
- 41. ITALIAN.



47.



48.



50.

Santelli masks lead the field in quality and design. Fabricated of .041 steel mesh (stronger than regulation required .039) on adjustable spring steel frame. Galvanized against rust. Black inner coating assures glare-free maximum vision.

- 47. **FOIL-EPEE MASKS.** Hand-stitched white leatherette binding, padded detachable bib.
- 48. **THREE-WEAPON MASK.** Reinforced headpiece with genuine cowhide strip.
- 49. **FOIL-EPEE MASK.** Durable white leatherette binding, padded detachable bib, wire-stitched.
- 50. **SABRE MASK.** Handsomely finished with genuine cowhide full leather headpiece.

## MASKS



46.



42.



45.



42A.



44.



43.

## GLOVES

- 42. **FOIL GLOVE.** Our most popular model in soft brown chamois, lightly padded. Sizes 6 to 10.
- 42A. **FOIL GLOVE.** Smooth white leather, lightly padded. Sizes 6 to 10.
- 43. **SABRE GLOVE.** Brown chamois, well padded with quilted cuff. Sizes 6 to 10.
- 44. **FOIL-SABRE GLOVE.** Smooth white leather, lock-stitched with reinforced palm. Sizes 6 to 10.
- 45. **FOIL EPEE GLOVE.** Rugged cuff Chamois palm. Snug fit. Sizes 8 to 10.
- 46. **THREE-WEAPON GLOVE.** All white with elastic cuff, reinforced palm. Sizes 8 to 10.

Please specify on your order whether equipment is for right or left-handed fencer. Gloves available in even sizes only.



Full Uniform featuring #58 | INSTRUCTOR'S PLASTRON

## UNIFORMS

- 51. **MEN'S THREE-WEAPON JACKET.** Our best quality bleached and preshrunk fine count Army duck. Stock sizes 34 to 44.
- 52. **MEN'S FOIL-SABRE JACKET.** Bleached and sanforized ten-ounce Army duck. Sizes 34 to 44.
- 52B. **MEN'S SABRE JACKET.** Padded gabardine, waist length.
- 53. **MEN'S PRACTICE JACKET.** Rugged unbleached duck, preshrunk. Zippered at back. Sizes small, medium, large, extra large.
- 54. **MEN'S HALF JACKET.** Durable unbleached duck, adjustable side straps. Sizes small, medium, large, extra large.
- 55. **WOMEN'S REGULATION JACKET.** Pure white padded gabardine, sanforized. Sizes 32 to 40. (Featured on front cover.)
- 55C. **WOMEN'S REGULATION JACKET.** As above with groin strap. Sizes 32 to 40.
- V. **VELCRO CLOSURE** available on jackets \$3.00 extra net.
- 56. **WOMEN'S PRACTICE JACKET.** Preshrunk padded duck, zippered at back. Sizes small, medium, large.
- 57. **WOMEN'S HALF JACKET.** Preshrunk padded duck, one sleeve, adjustable side straps. Small, medium, large.
- 59. **MEN'S THREE-WEAPON KNICKERS.** Fine count Army duck to match jacket. Sizes 28 to 40.
- 60. **MEN'S FOIL-SABRE KNICKERS.** Ten-ounce Army duck to match jacket. Sizes 28 to 40.
- 61. **WOMEN'S KNICKERS.** Pure white gabardine to match jacket. Sizes 22 to 30.

**NOTE ON SIZES:** Jackets and trousers available in sizes noted. For custom tailoring add \$7.50 to cost.



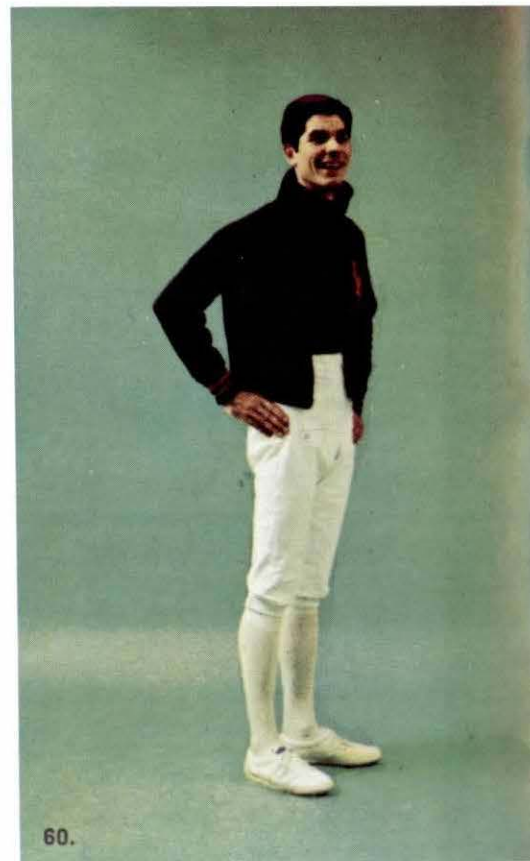
51. 59.



54.



57.



60.



V. VELCRO CLOSURE



53.



56.

## MISCELLANEOUS



58.



58E.



85. 85A.



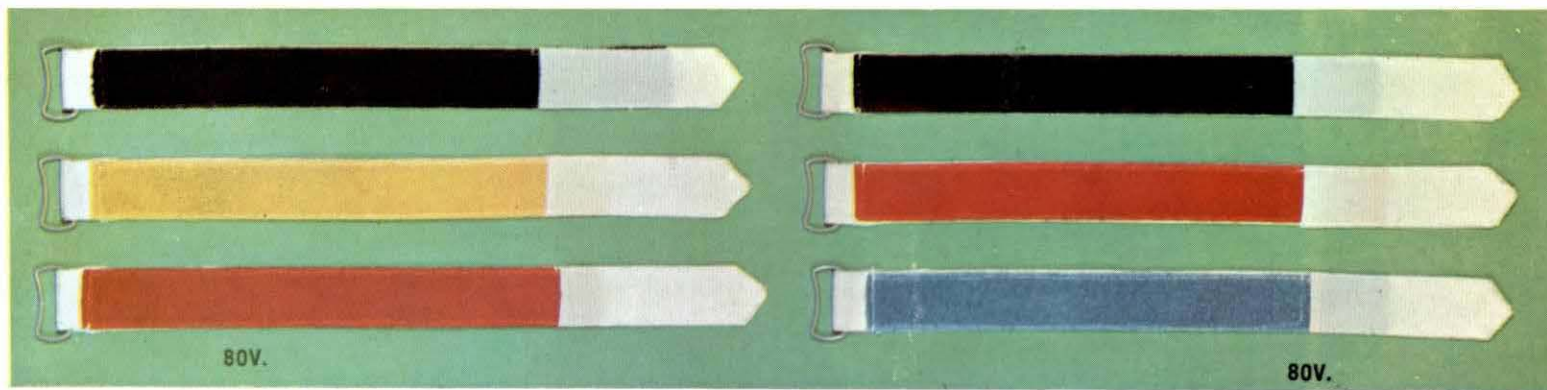
81.

- 58. **PLASTRON.** Quilted chest protector. Quality padded canvas with adjustable straps.
- 58E. **Safety plastron**
- 58I. **Instructors plastron**
- 68. **THUMB PAD.**
- 69. **EQUIPMENT BAG.** Holds complete outfit, 13-ounce dark canvas.
- 69P. **EQUIPMENT BAG.** Deluxe model of waterproof fabric with lapped outside pocket.
- 70. **TEAM EQUIPMENT BAG.** Large size for three complete outfits.
- 71. **SINGLE WEAPON BAG.**
- 72. **PRACTICE TARGET.**
- 73. **PADDED PRACTICE EPEE SLEEVE.**
- 74. **KNEE LENGTH WHITE SOCKS.** Stretch size to fit 9 to 13.
- 77. **FOIL TIP.** Red plastic.
- 79. **WOMEN'S BREASTPLATES.** Light weight aluminum.
- 80V. **Velcro wrist strap**
- 81. **FENCING SHOES.** Lightweight, carefully designed for long wear and greater mobility.
- 82. **BIB FOR MASK.**
- 83. **PLASTIC HEEL CUP.** Protects heel from bruising.
- 84. **SCORE PAD.** Team or individual.
- 85. **RULE BOOK.** A.F.L.A.
- 85A. **KNOW THE GAME BOOK.** Basic instructions and rules.
- 86. **ELBOW PROTECTOR FOR SABRE.**
- 90. **LAPEL PIN.** Mask with crossed foil and sabre.

SS **WARM-UP SUIT,** Helanca and Cotton, Men's and Women's, Small, Medium, and Large. Maroon, Navy, Royal Blue.



SS



80V.

80V.



72.

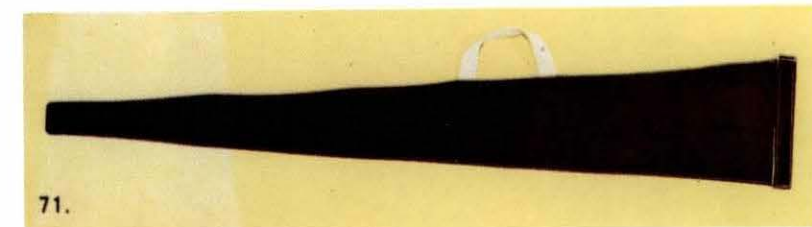


73.

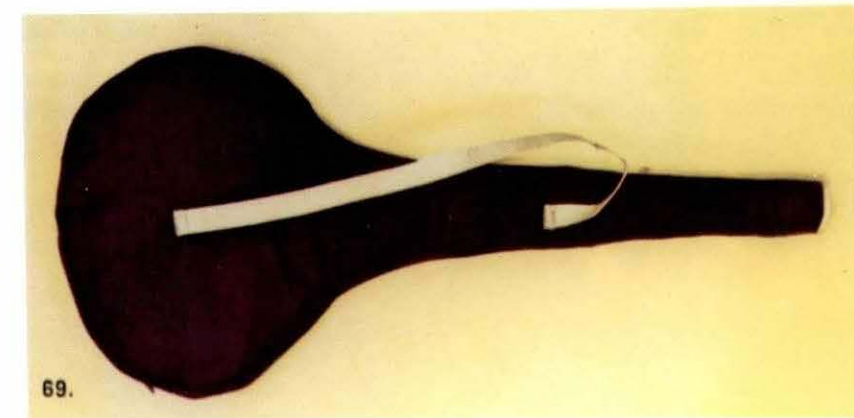
## CARRYING CASES



70.



71.

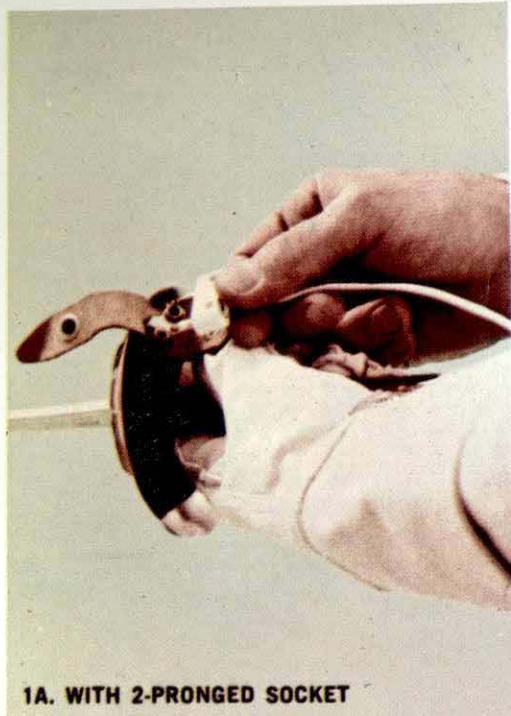


69.

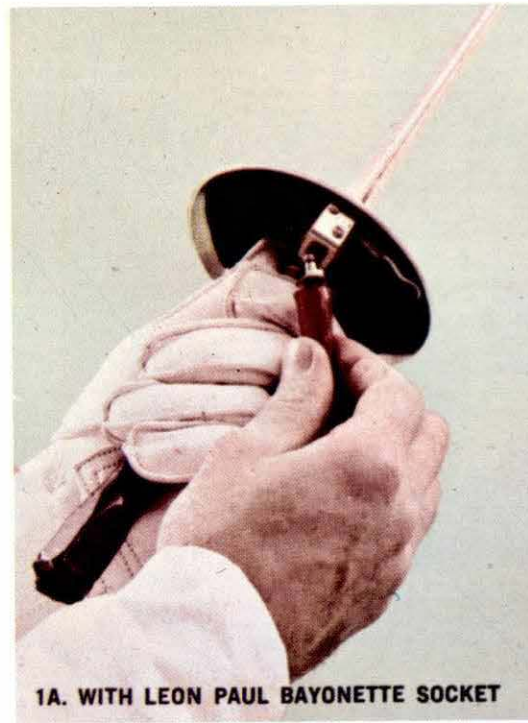


69P.

## ELECTRICAL EQUIPMENT



1A. WITH 2-PRONGED SOCKET



1A. WITH LEON PAUL BAYONETTE SOCKET



10.

1A. FRENCH ELECTRICAL FOIL. FIE approved mounting. Your choice of guard socket (European 2-pronged or Leon Paul bayonette socket).

4A. ITALIAN ELECTRICAL FOIL FIE approved mountings. Choice of socket.

5A. PISTOL GRIP ELECTRICAL FOIL. FIE approved mounting. Any model grip. Your choice of socket.

10. FRENCH ELECTRICAL EPEE. With official FIE guard socket and latest approved points.

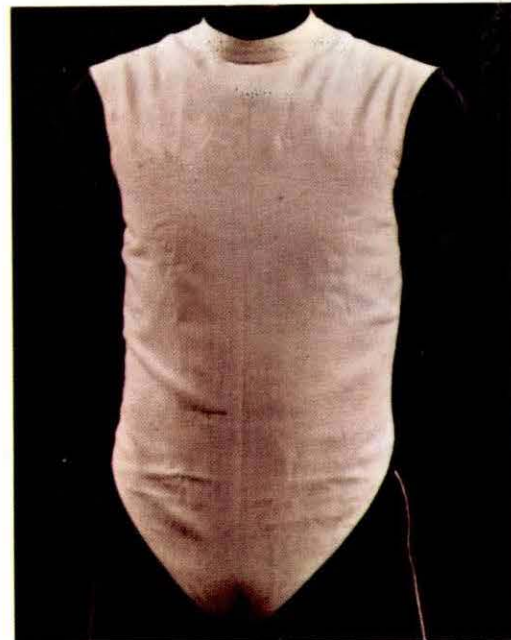
12. ITALIAN ELECTRICAL EPEE. As above.

14. PISTOL GRIP ELECTRICAL EPEE. Same as above.

52A. MEN'S METALLIC JACKET. Imported fabric. Sizes 34 to 44.

55A. WOMEN'S METALLIC JACKET. Imported fabric. Sizes 32 to 40.

87. FOIL-EPEE REELS. Heavy duty reels with extra-strong wire and plug receptacles. Prieur or Leon Paul Models.



52A.

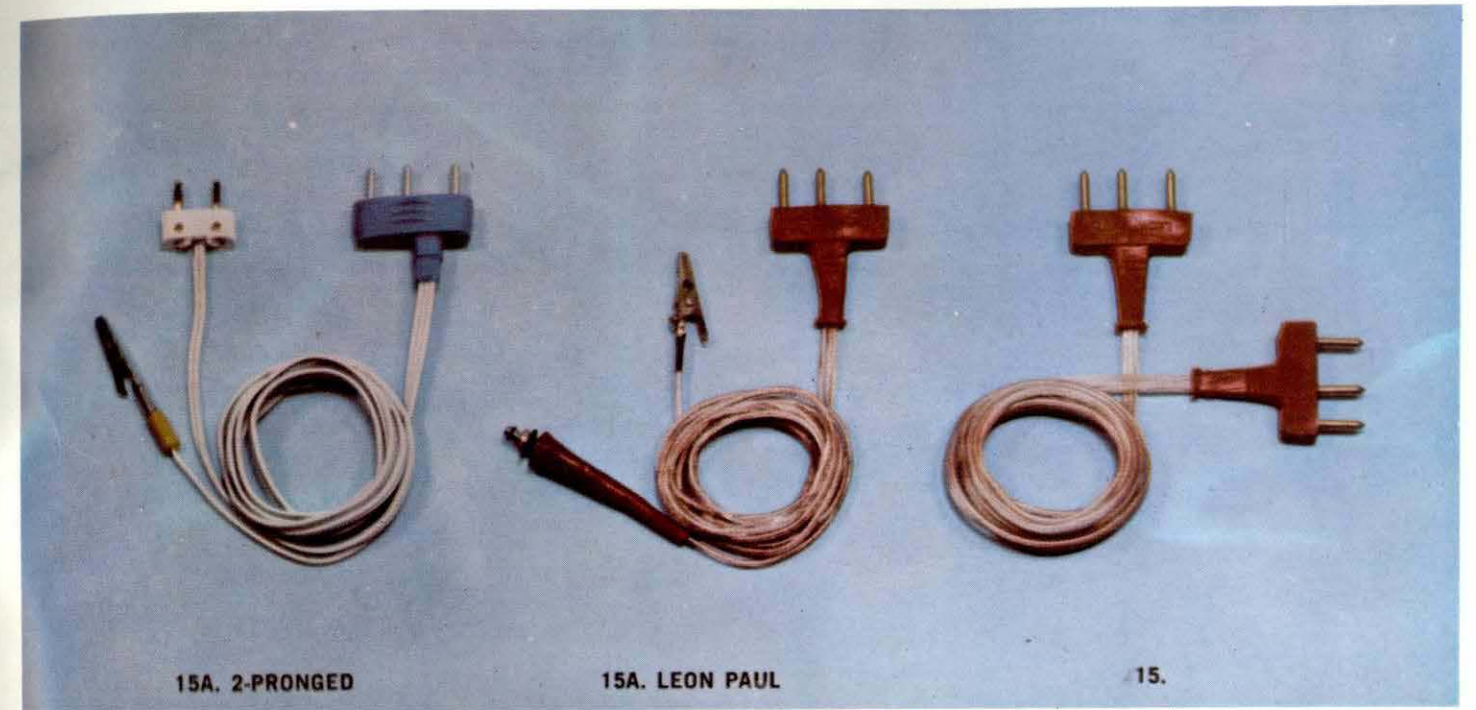


87. PRIEUR MODEL



87. LEON PAUL MODEL

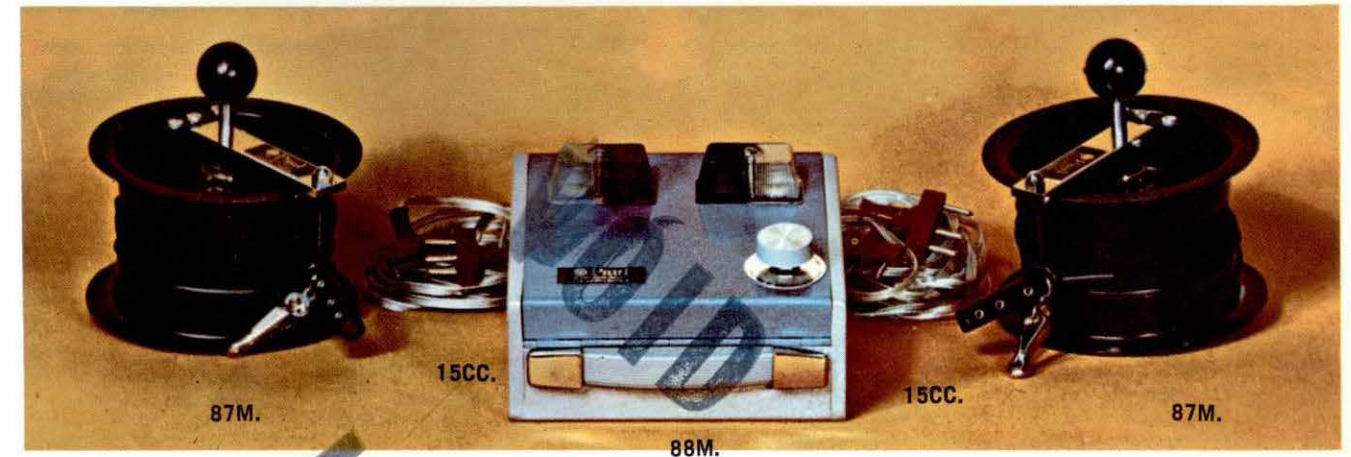
87. FOIL-EPEE REELS. Heavy duty reels with extra-strong wire and plug receptacles. Prieur or Leon Paul Models.



15A. 2-PRONGED

15A. LEON PAUL

15.



87M.

15CC.

88M.

15CC.

87M.

### MINI-MODEL FOIL-EPEE SCORING DEVICE

Ideal club scorer or second machine shown here. Complete with reels and cables—powered by internal 12 volt battery—automatic reset mechanism.

19A. ELECTRICAL FOIL BLADE. Wired with point and ready for mounting.

24. ELECTRICAL EPEE BLADE. Wired with point and ready for mounting.

76. ELECTRICAL EPEE POINT. Complete with wire. Latest FIE model.

76A. ELECTRICAL FOIL POINT. Complete with wire. Latest FIE model.

15. ELECTRIC EPEE BODY CORD. FIE 3-pronged plugs.

15A. ELECTRIC FOIL BODY CORD. Your choice of 2-pronged or bayonette plug.



88.

88. FOIL-EPEE SCORING DEVICE. Leon Paul model. Works from battery or wall current. Automatic reset mechanism.